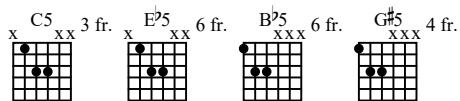


THE BAD TOUCH

As recorded by The Blood Hound Gang

(From the 2000 Album HORRAY FOR BOOBIES)



A Intro

Moderate Rock ♩ = 124

Gtr II *mp* (elec. w/dist tone)

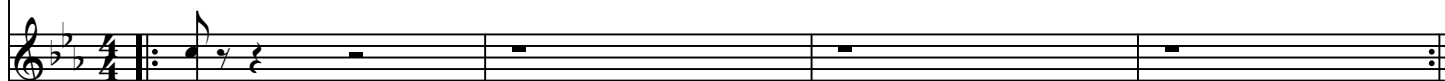
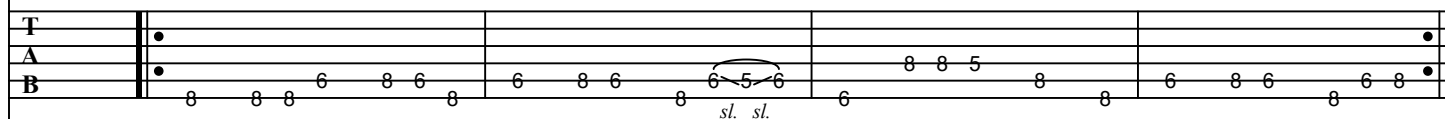
C5

E75

B75

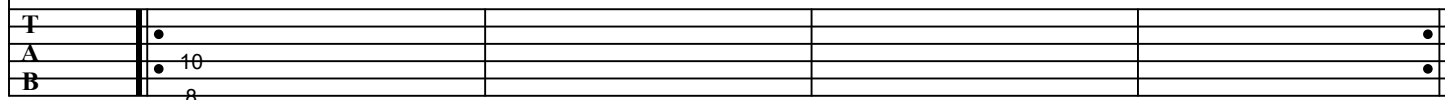


Gtr I *mf* (elec. w/clean tone)

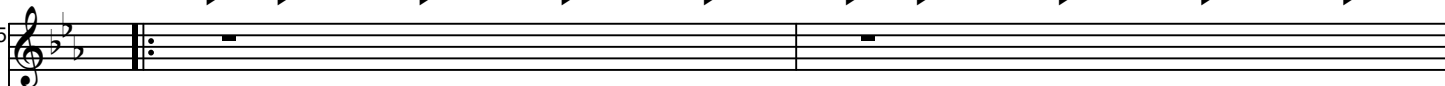


On D.S. only

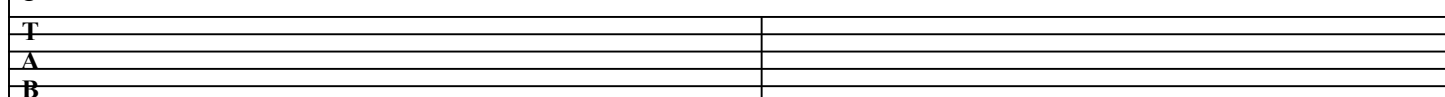
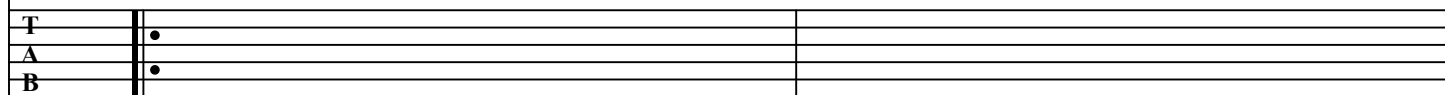
Gtr IV *ff*



B Verses 1 and 2



mf



9

C5

E^b5

T

A

B

11

B^b5

1.

G[#]5

T

A

B

13

2.

G[#]5

C5

Gtr II (w/dist)

Gtr III (elec. w/dist. tone)

P.M.-----

T

A

B

6 6 8 8 6 6 8 8 6 6 8 8 6 6 8 8

10 10 13 10 10 10 13 10 10 10 13 10 10 10 13 10

15

E^b5

B^b5

P.M.-----

T

A

B

8 8 13 8 8 8 13 8 8 8 13 8 8 8 13 8

8 8 12 8 8 8 12 8 8 8 12 8 8 8 12 8

[D] Interlude
C5

Gtr II G#5

Gtr III P.M.

Gtr IV *ff* (Horns arr. for elec. w/dist. tone)

T	A	B
	6 6 8 8 6 6 8 8 6 6 8 8 6 6 8 8	10 10 13 10 10 10 13 10 10 10 13 10 10 10 13 10

T	A	B
	12 10 12 12 13 13 12 13 12	10 8 10 10 11 11 10 11 10

E^b5 B^b5

P.M.

T	A	B
	8 8 13 8 8 8 13 8 8 8 13 8 8 8 13 8	8 8 12 8 8 8 12 8 8 8 12 8 8 8 12 8

T	A	B
	10 8 12 12 13 13 12 13 12 15 8 12 12 13 13 12 13 12	8 6 10 10 11 11 10 11 10 13 6 10 10 11 11 10 11 10

[E] Breakdown

(2nd time) D.S.

G#5
Gtr II

21

Gtr III
P.M.

Gtr III (elec. w/dist. tone and flanger)

T
A 6 6 8 8 6 6 8 8 6 6 8 8 6 6 8 8 10 10 13 10 10 10 13 10 10 10 13 10
B

Gtr IV

T
A 8 8 8 8 10 8 10
B 6 6 6 6 8 6 8
sl. sl.

1.

23

P.M.

T
A 8 8 13 8 8 8 13 8 8 8 13 8 8 8 13 8 8 8 12 8 8 8 12 8 8 8 12 8 8 8 12 8 6 6 8 8 6 6 8 8 6 6 8 8
B

[F] Verse 3

2.

G#5
Gtrs II, III (elec. w/dist. tone)

C5

26

P.M.

T
A 6 6 8 8 6 6 8 8 6 6 8 8 6 6 8 8 10 10 13 10 10 10 13 10 10 10 13 10
B

E^b5

B^b5

28

P.M.

T
A 8 8 13 8 8 8 13 8 8 8 13 8 8 8 13 8 8 8 12 8 8 8 12 8 8 8 12 8 8 8 12 8
B

G **Outro**
C5
Gtr III (elec. w/dist. tone)

G#5

30

P.M.-----

Gtr II(elec. w/dist. tone)

T
A 6 6 8 8 6 6 8 8 6 6 8 8 6 6 8 8
B 6 6 8 8 6 6 8 8 6 6 8 8 6 6 8 8

T
A 10 10 13 10 10 10 13 10 10 10 13 10 10 10 13 10
B 10 10 13 10 10 10 13 10 10 10 13 10 10 10 13 10

Gtr III

Gtr IV (horns arr. for elec. w/dist. tone)

T
A 12 10 12 12 13 13 12 13 12
B 10 8 10 10 11 11 10 11 10

E^b5

B^b5

32

P.M.-----

T
A 8 8 13 8 8 8 13 8 8 8 13 8 8 8 13 8
B 8 8 13 8 8 8 13 8 8 8 13 8 8 8 13 8

T
A 10 8 12 12 13 13 12 13 12 15 8 12 12 13 13 12 13 12
B 8 6 10 10 11 11 10 11 10 13 6 10 10 11 11 10 11 10

G#5

1

P.M.

5x

T

A

B

6 6 8 8 6 6 8 8 6 6 8 8 6 6 8 8

8 8 8 8 10 8 10

6 6 6 6 8 6 8

sl. sl.